



## **阻尼辊系列**

### **Brake Roller / Speed Controller**

**产品简介**  
Product Introduction

**Suzhou Zhisong Mould Co., Ltd**  
**Focus on Conveyor Rollers**



The damping roller in the gravity slide is also called the reducer/speed controller. It is mainly used to eliminate the gravity acceleration generated by the load-bearing pallet in the gravity slide, so that the pallet can slide down the track smoothly and slowly, eliminating safety hazards. Ensure the safety of goods and operators. The braking force can be automatically adjusted for pallets of different weights. Maintenance free & zero energy consumption.

## 内置阻尼辊

### Ø50/60 Internal Brake Roller 03-04



Application:	Cartons, Boxes, Light goods
Load capacity:	10-100kgs

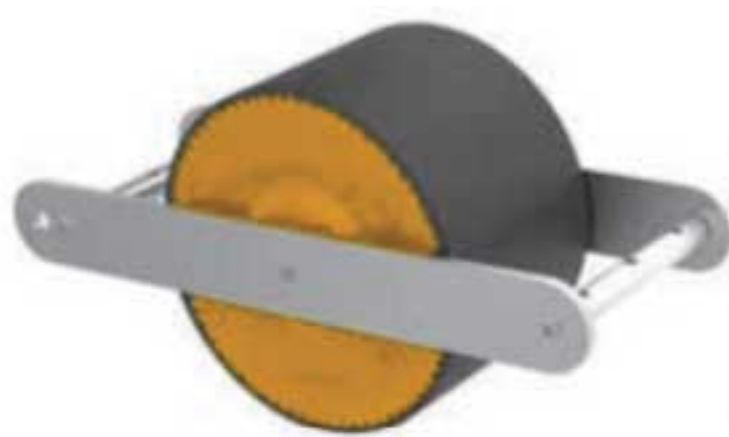
### Ø80 Internal Brake Roller 05-06



Application:	Wooden pallet, Plastic pallet
Load capacity:	200-1500kgs

## 外置阻尼辊

### Ø120 External Brake Roller 07-08



Application:	Wooden pallet, Plastic pallet
Load capacity:	200-1000kgs

### Ø120 External Brake Roller (connect) 09-10



Application:	European/Australian standard pallet, nine-legged pallet
Load capacity:	200-1000kgs



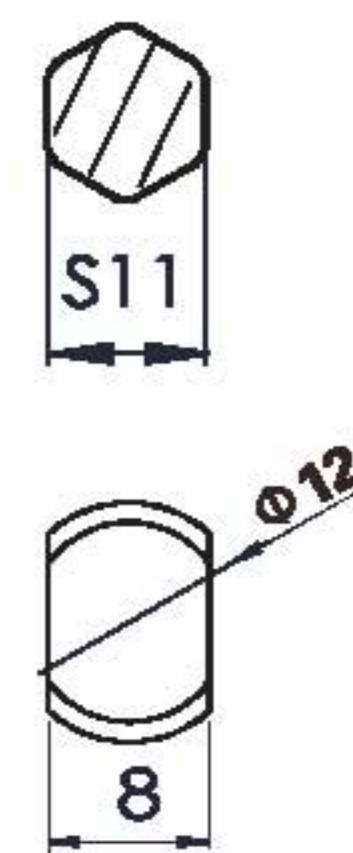
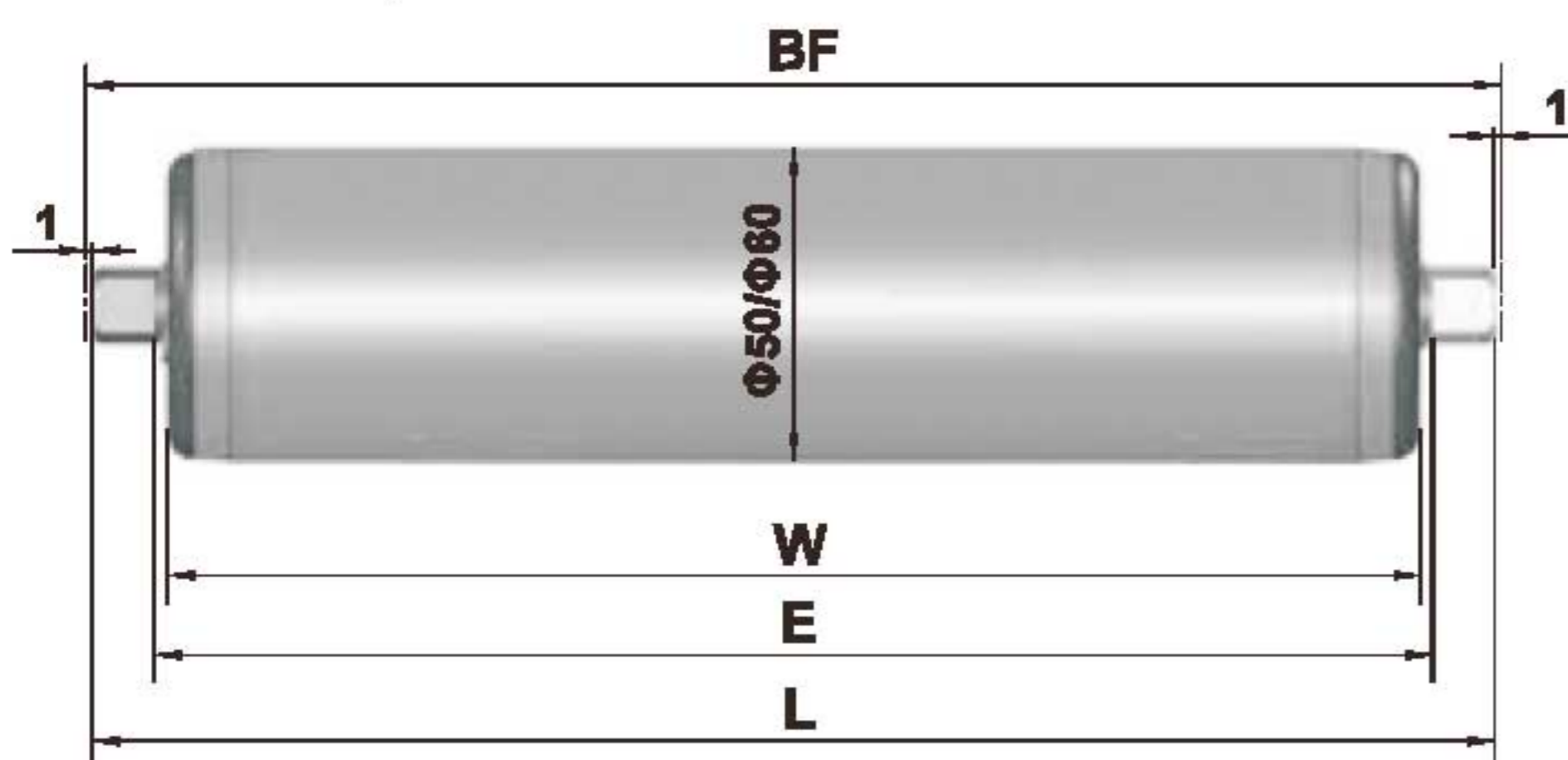
## 内置阻尼辊 (Φ50/60) Internal Brake Roller (YZBR50/YZBR60)



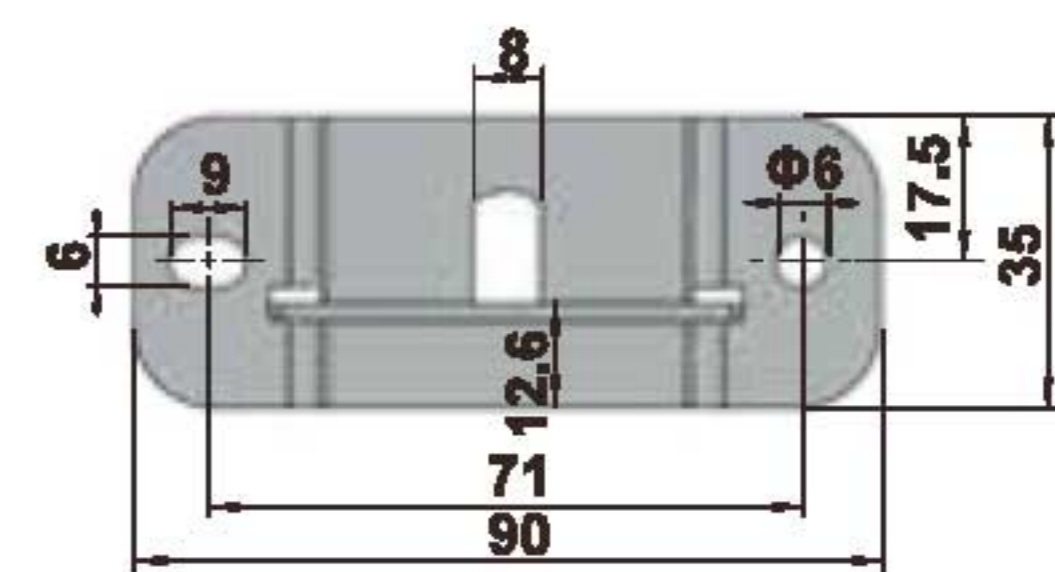
- Applicable cargo type, flat, hard-bottomed objects. Such as cartons, material boxes, etc.

### 尺寸图 Dimensional Drawing

YZBR50/60



Mounting brackets -35



Brackets 2pcs, bolts & nuts 4 sets

型号 Model	管径及壁厚 D*T	L最小mm L Min	L最大mm L Max			
YZBR50/AA-S11	50x1.5	145	1250	BF=E	E=L-20	W=L-24
YZBR50/AA-12	50x1.5	145	1250	BF=L+2	E=L-20	W=L-24
YZBR60/AA-12	60x1.5	145	1300	BF=L+2	E=L-20	W=L-24

### 规格参数 Specifications

型号 Model	管径及壁厚 D*T	轴端形式 Shaft	适用重量 Weight Range	筒体 Tube	
				Steel/ZN	SS304
YZBR50/AA-S11	50x1.5	S11六角轴S11 Hex	10-60kg	√	√
YZBR50/AA-12	50x1.5	b/h = 8/12 铣扁MilledFlats	10-60kg	√	√
YZBR60/AA-12	60x1.5	b/h = 8/12 铣扁MilledFlats	20-100kg	√	

\*YZBR50/AA 表面可提供 2mm PU 胶套 YZBR50/AA has 2mm PU sleeve lagging providable

### 订货示例 Part No.

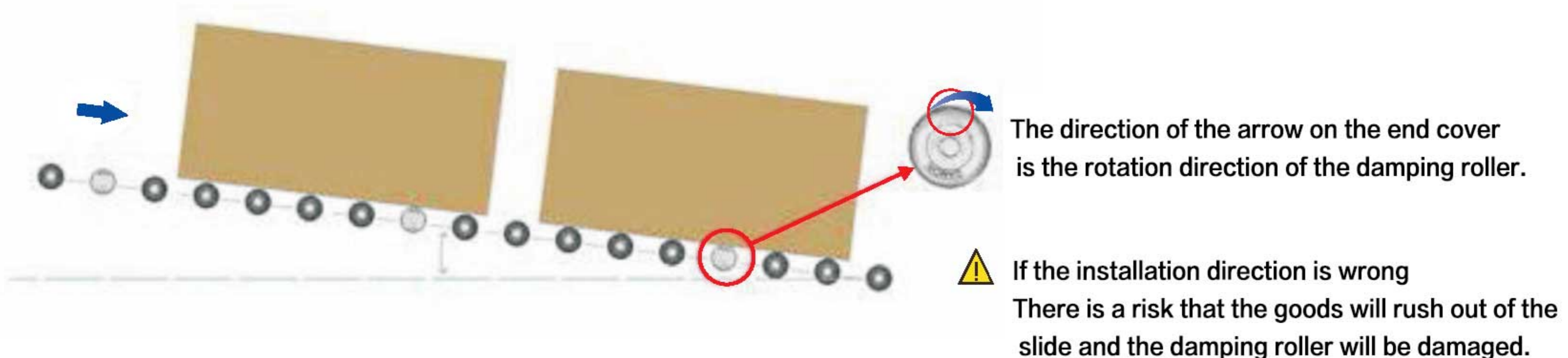
<b>YZBR</b>	<b>50</b>	<b>/</b>	<b>AA</b>	<b>—</b>	<b>S11</b>	<b>—</b>	<b>Z</b>	<b>—</b>	<b>550</b>
Model	Diameter				Shaft		Tube		Length (mm)
YZBR	50 60				S11: 12:		U: Steel tube with PU sleeve Z: Galvanized steel S: SS304		



### 安装示例 Installation Instructions



1. Use fasteners to fix a mounting bracket on the inside of the rack
2. Insert the shaft into the fixed bracket opening, insert another bracket at the other end of the shaft, and lock it with fasteners
3. It is recommended that the damping roller surface be 1–2mm higher than the unpow-ered roller surface to ensure the speed control effect.



### 使用注意事项 Suggestion

1. Simple slide slope range: 3~12° . Please refer to the specification table for cargo weight.
2. If the object enters the slide with initial velocity, please add 2~3 damping rollers at the entrance.
3. It is recommended that the center distance between adjacent damping rollers should not exceed the length of the goods in the sliding direction to avoid acceleration and impact during the sliding process.
4. Before using in large quantities, it is recommended to try a small amount first, and test and confirm on the slide according to the actual weight and angle.
5. If you have special usage conditions (large weight and large angle or small weight and small angle), please contact us for consultation.

Applicable ambient temperature: -5C ~ +40℃  
Humidity: 30%~70% no condensation



## 内置阻尼辊 (Φ80) Internal Brake Roller (YZBR80)

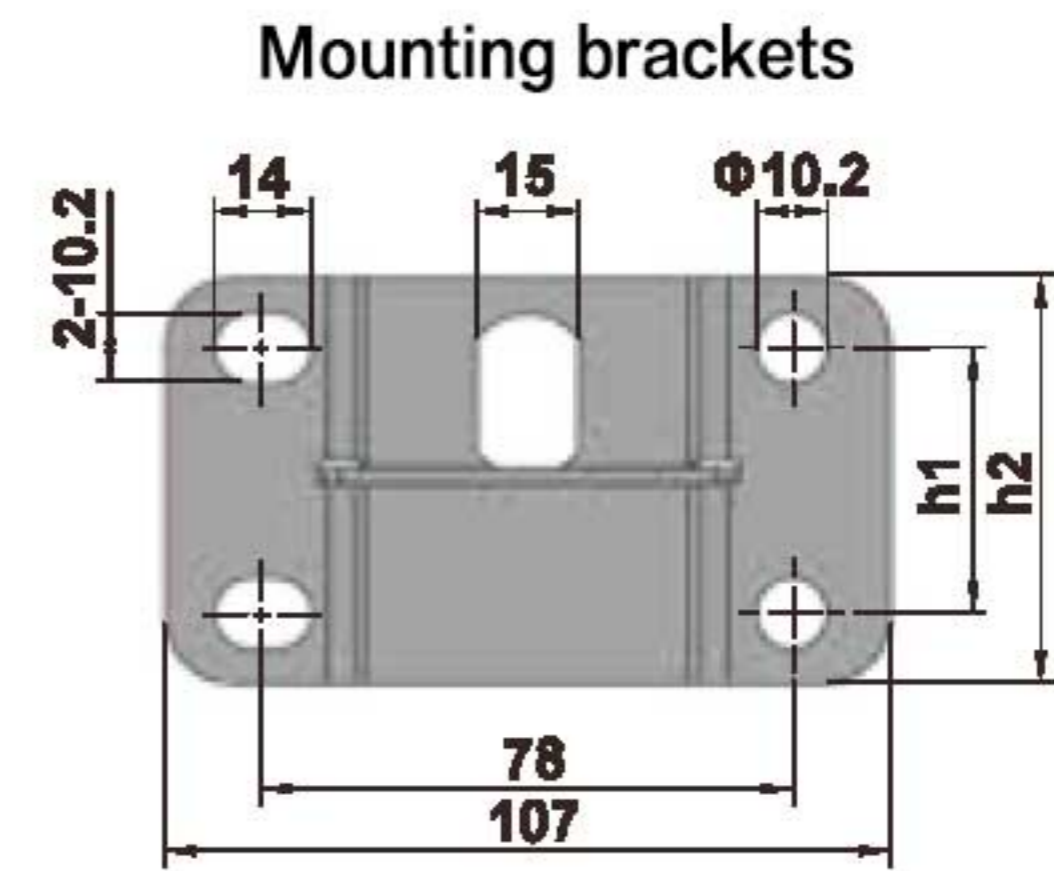
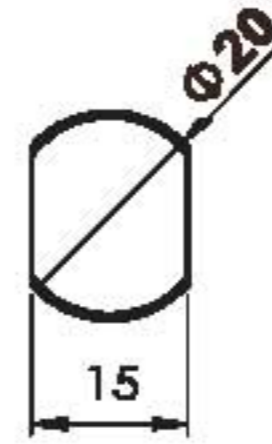
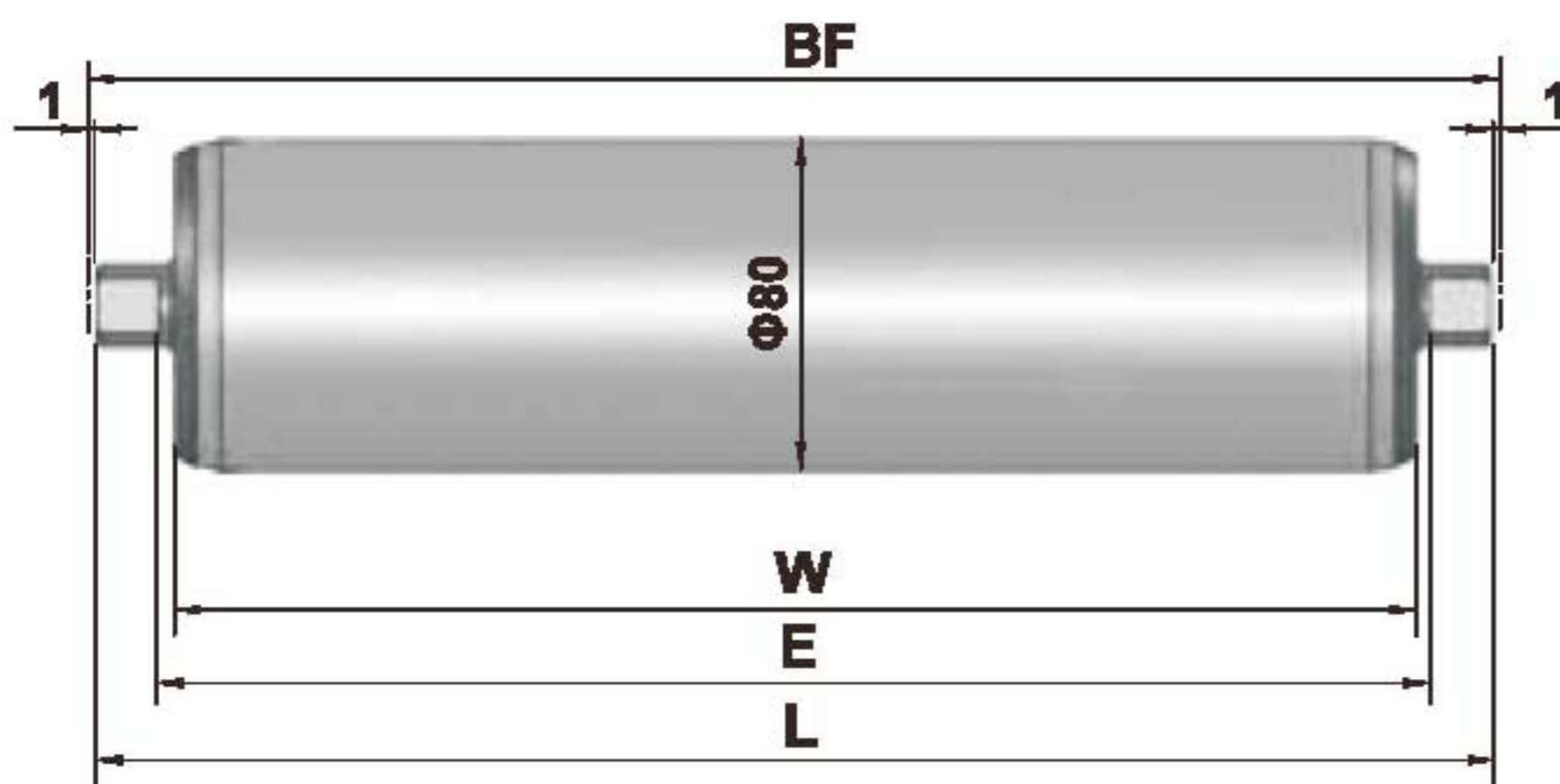


- Suitable for wooden pallets, plastic pallets



### 尺寸图 Dimensional Drawing

#### YZBR80



Brackets 2pcs, bolts & nuts 8 sets

型号 Model	h1	h2
80-55	30.3	55
80-60	39	60

型号 Model	管径及壁厚 D*T	L最小mm L Min	L最大mm L Max			
YZBR80/AA	80x2.5	265	1350	BF=L+2	E=L-30	W=L-38
YZBR80/BA	80x2.5	340	1350	BF=L+2	E=L-30	W=L-38
YZBR80/AS	80x2.5	265	1350	BF=L+2	E=L-30	W=L-38

### 规格参数 Specifications

型号 Model	管径及壁厚 D*T	轴端形式 Shaft	适用重量 Weight Range	筒体 Tube	
				Steel/ZN	Knurled
YZBR80/AA	80x2.5	b/h = 15/20 铣扁	200-1000kg	√	√
YZBR80/BA			1000-1500kg	√	√
YZBR80/AS			200-1000kg	√	√

\* Suitable for first-in, last-out gravity slides. Roller knurling to increase friction

### 订货示例 Part No.

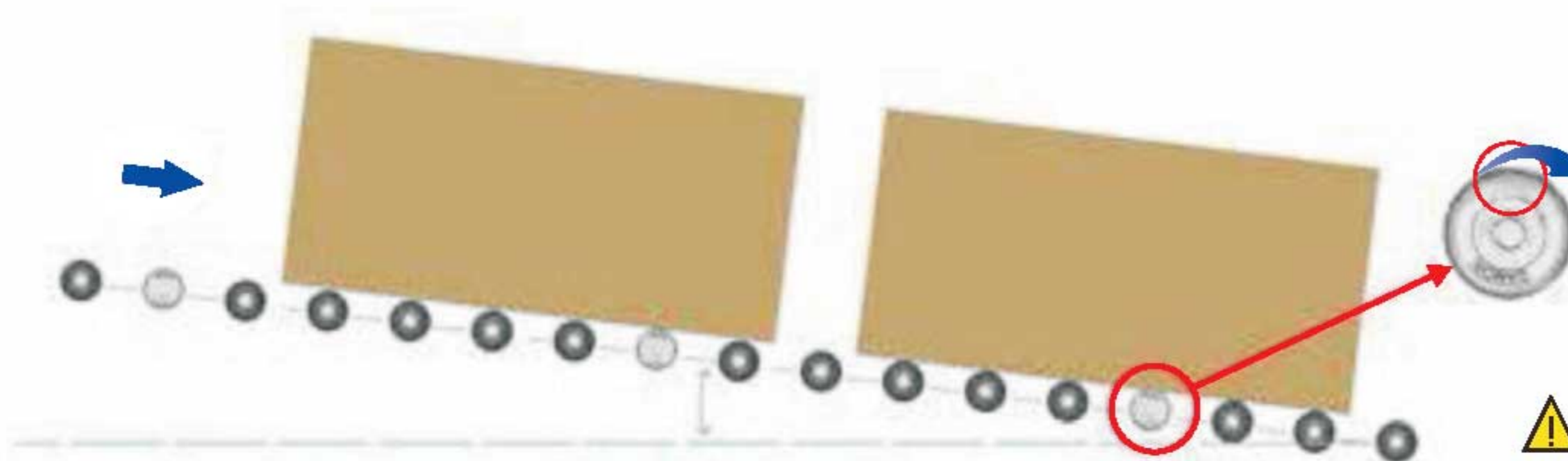
<b>YZBR</b>	<b>80</b>	<b>A</b>	<b>A</b>	<b>20</b>	<b>Z</b>	<b>1248</b>
Model	Diameter	Load capacity	Rotation	Shaft	Tube	Length (mm)
YZBR	80	A: 200~1000kgs B: 1000~1500kgs	A: Standard S: Unidirectional	20: Milled	Z: ZN K: Knurled	



### 安装示例 Installation Instructions



1. Use fasteners to fix a mounting bracket on the inside of the rack
2. Insert the shaft into the fixed bracket opening, insert another bracket at the other end of the shaft, and lock it with fasteners
3. It is recommended that the damping roller surface be 1–2mm higher than the unpowered roller surface to ensure the speed control effect.



The direction of the arrow on the end cover is the rotation direction of the damping roller.

**⚠** If the installation direction is wrong  
There is a risk that the goods will rush out of the slide and the damping roller will be damaged.

### 使用注意事项 Suggestion

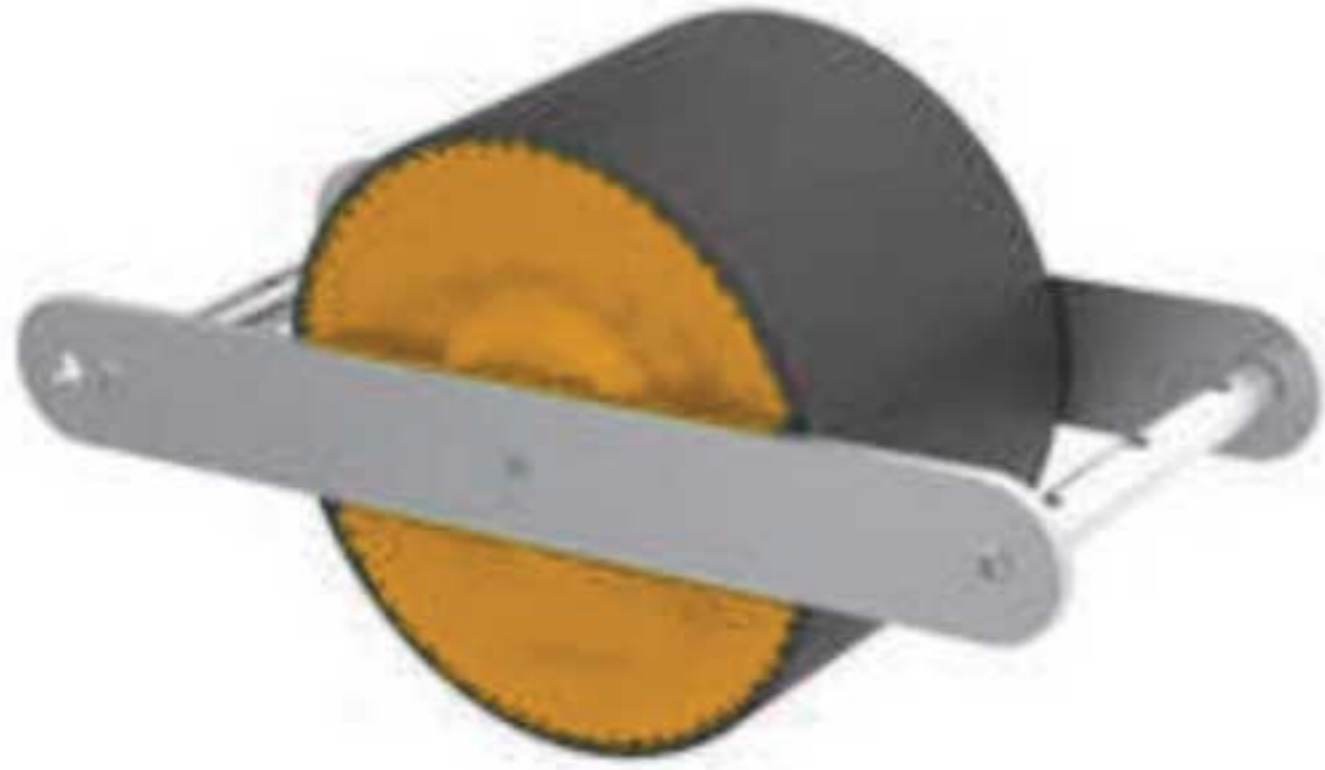
1. Simple slide slope range: 3~12° . Please refer to the specification table for cargo weight.
2. The installation distance is recommended to be the length of the pallet. Each pallet position must be installed with a Yangni silver. Impact and acceleration must not occur during the sliding process of the pallet.
3. It is recommended that the center distance between adjacent damping rollers should not exceed the length of the goods in the sliding direction to avoid acceleration and impact during the sliding process.
4. Before using in large quantities, it is recommended to try a small amount first, and test and confirm on the slide according to the actual weight and angle.
5. If you have special usage conditions (large weight and large angle or small weight and small angle), please contact us for consultation.

Applicable ambient temperature: -5C ~ +40℃  
Humidity: 30%~70% no condensation



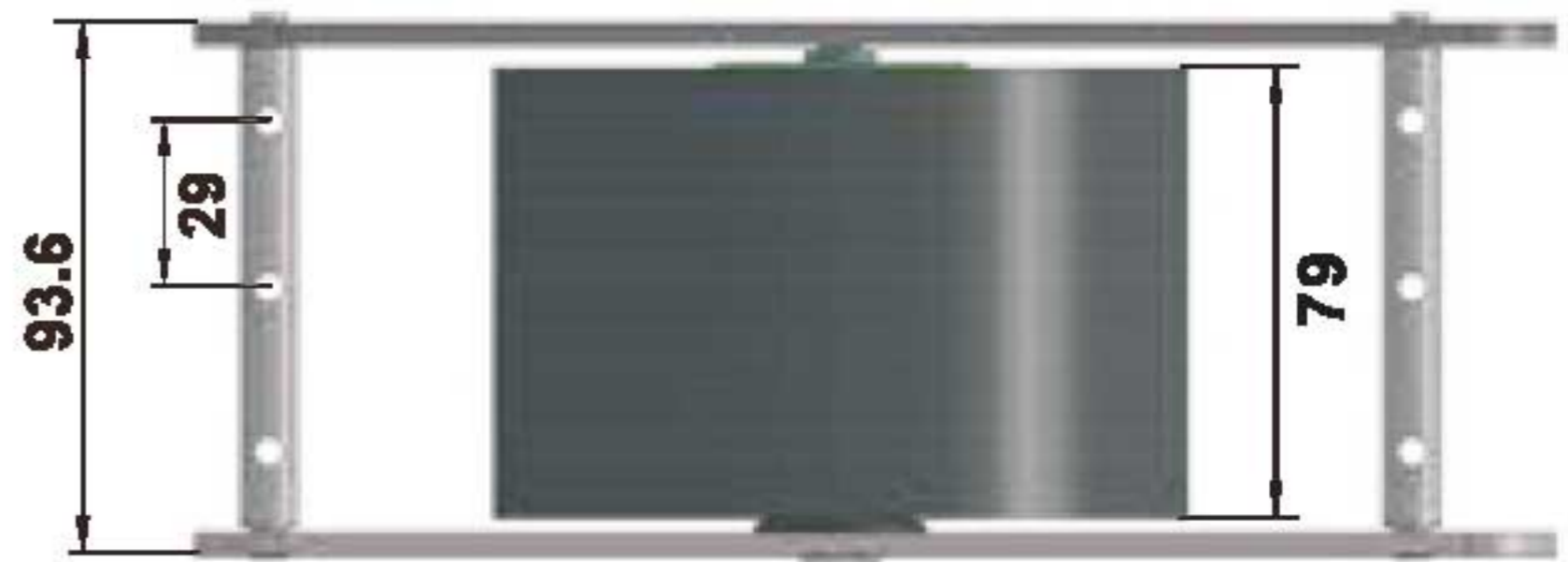
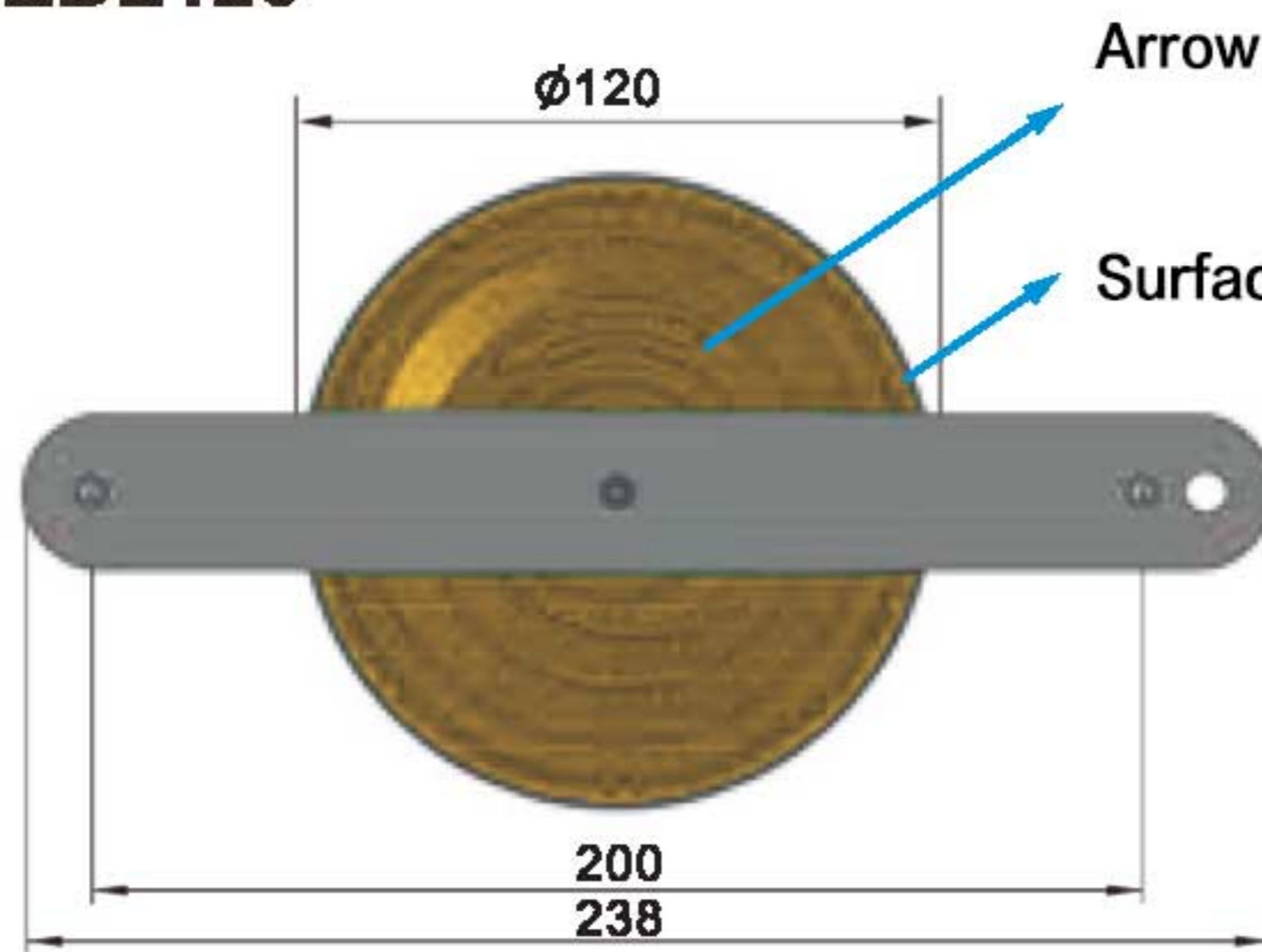
# 外置阻尼辊 (Φ120) External Brake Roller (YZBE120)

- Suitable for wooden pallets, plastic pallets



## 尺寸图 Dimensional Drawing

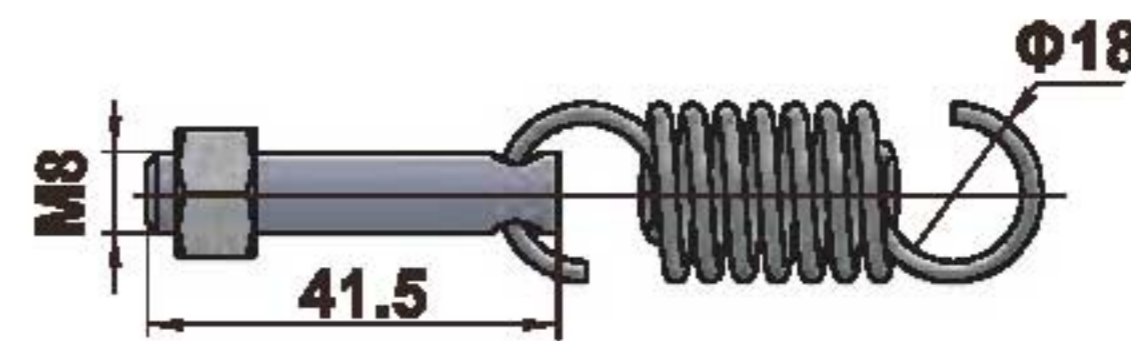
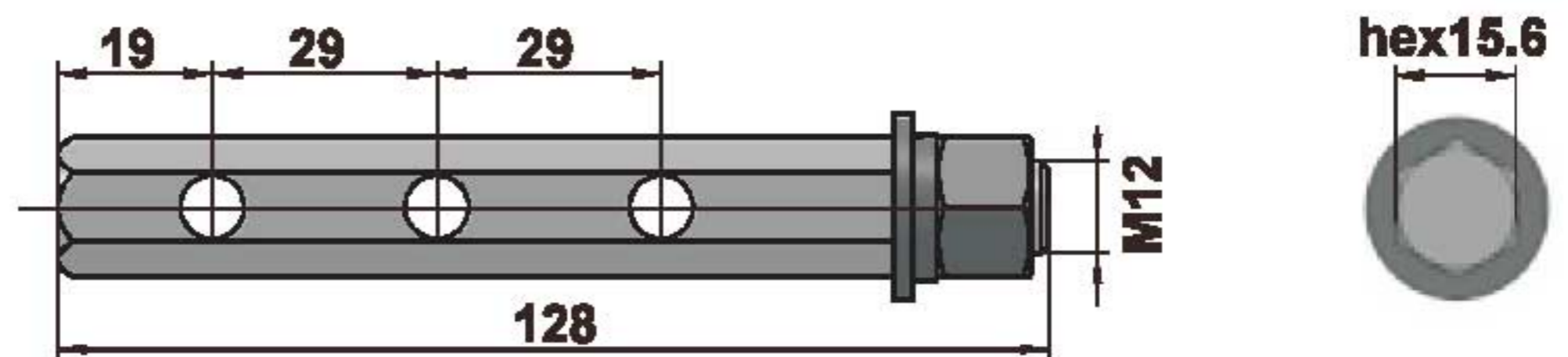
YZBE120



## 规格参数 Specifications

型号 Model	适用重量 Weight Range
YZBE120/AA	200~500kg
YZBE120/BA	500~1000kg

## 配件 Accessories



Hexagonal tie rod X2, headless drilling screw X6, tension spring X6, blasting nut X8, washer X4

## 订货示例 Part No.

<b>YZBE</b>	<b>120</b> /	<b>A</b>	<b>A</b>
Model	Diameter	Load capacity	Rotation
YZBE	120	A : 200~500kgs B : 500~1000kgs	A: Standard

\* Equipped with relevant accessories when leaving the factory

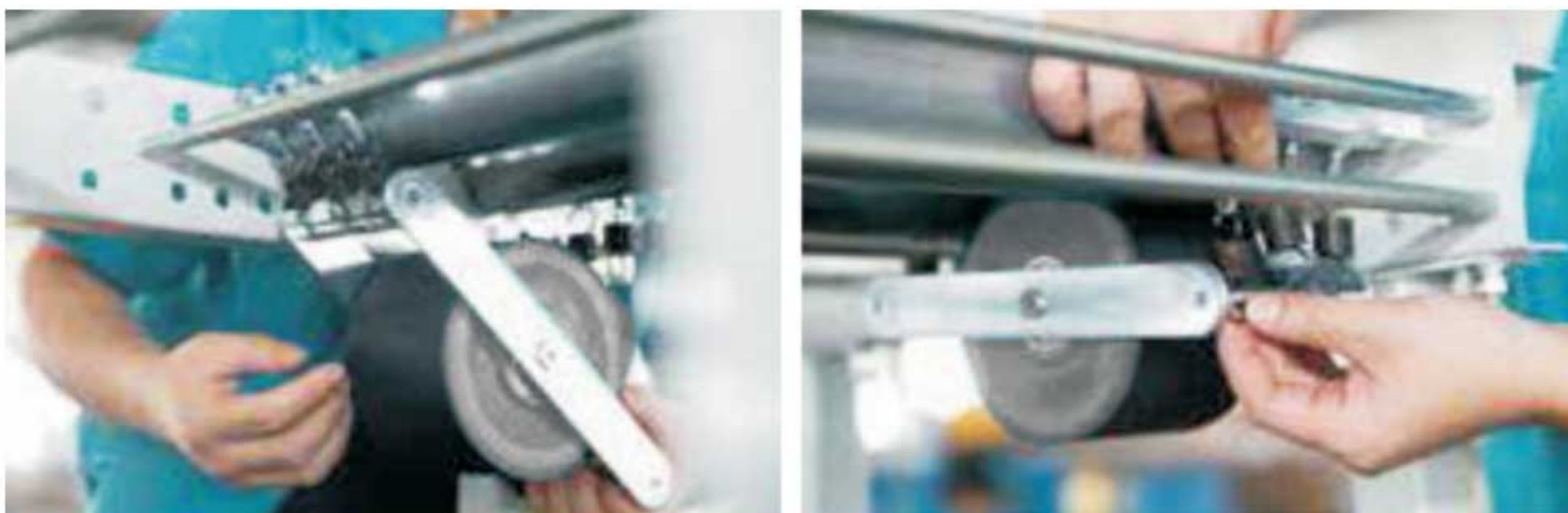


## 外置阻尼辊 (Φ120) External Brake Roller (YZBE120)

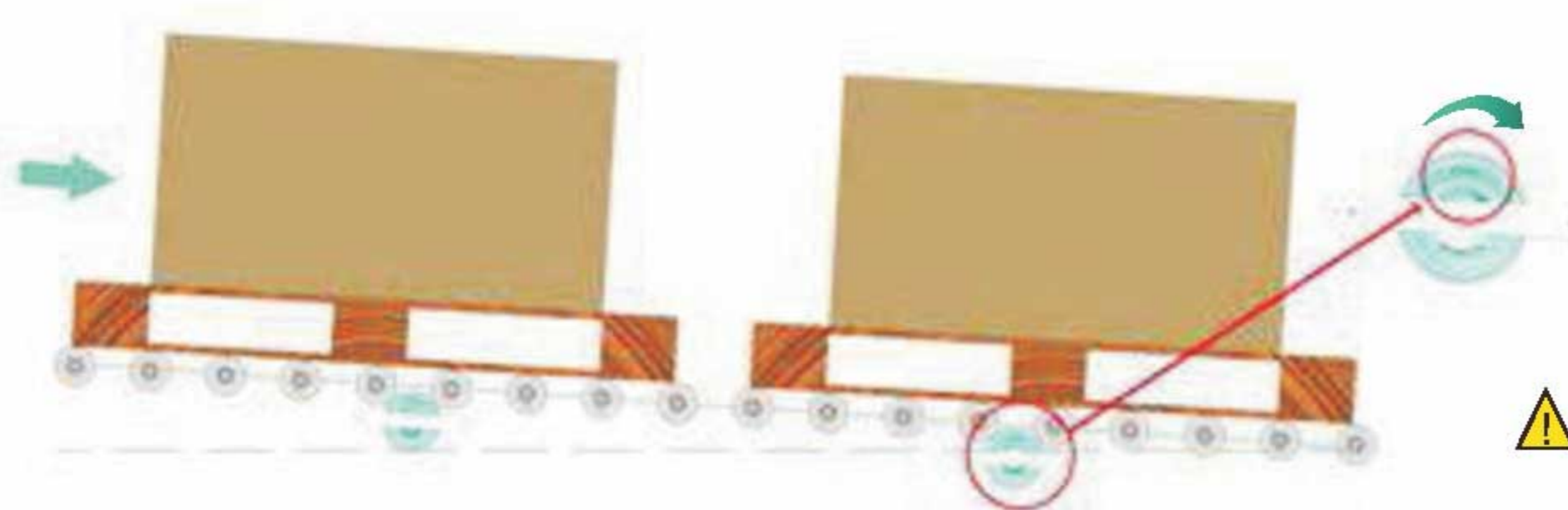
### 安装示例 Installation Instructions



1. Fix the hexagonal tie rod to the frame with fasteners on one side of the roller.
2. Pass the 3 headless drilled bolts through the 3 round holes of the hexagonal tie rod respectively, lock them with nuts, and install the tension spring in the tail hole of the headless drilled bolts. Also install another set of hexagonal tie rods, headless drilled bolts and tension springs on the other side of the idler roller.



3. Connect the three tension springs on one side to the three-hole shaft on the side of the 120 damping roller, and then also connect the tension spring and the three-hole shaft on the other side.
- (Note, the tension between the 120 damping roller and idler roller can be adjusted by adjusting the nut on the



The direction of the arrow on the end cover is the rotation direction of the damping roller.



If the installation direction is wrong  
There is a risk that the goods will rush out of the slide and the damping roller will be damaged.

### 使用注意事项 Suggestion

1. Simple slide slope range: 3~12° . Please refer to the specification table for cargo weight.
2. Recommendation: The center distance between adjacent damping rollers should not exceed the length of the pallet in the sliding direction to avoid acceleration and impact during the sliding process.
4. Before using in large quantities, it is recommended to try a small amount first, and test and confirm on the slide according to the actual weight and angle.
5. If you have special usage conditions (large weight and large angle or small weight and small angle), please contact us for consultation.

Applicable ambient temperature: -5C ~ +40℃  
Humidity: 30%~70% no condensation



## 外置阻尼辊（串联阻尼辊） External Brake Roller (YZBT120)

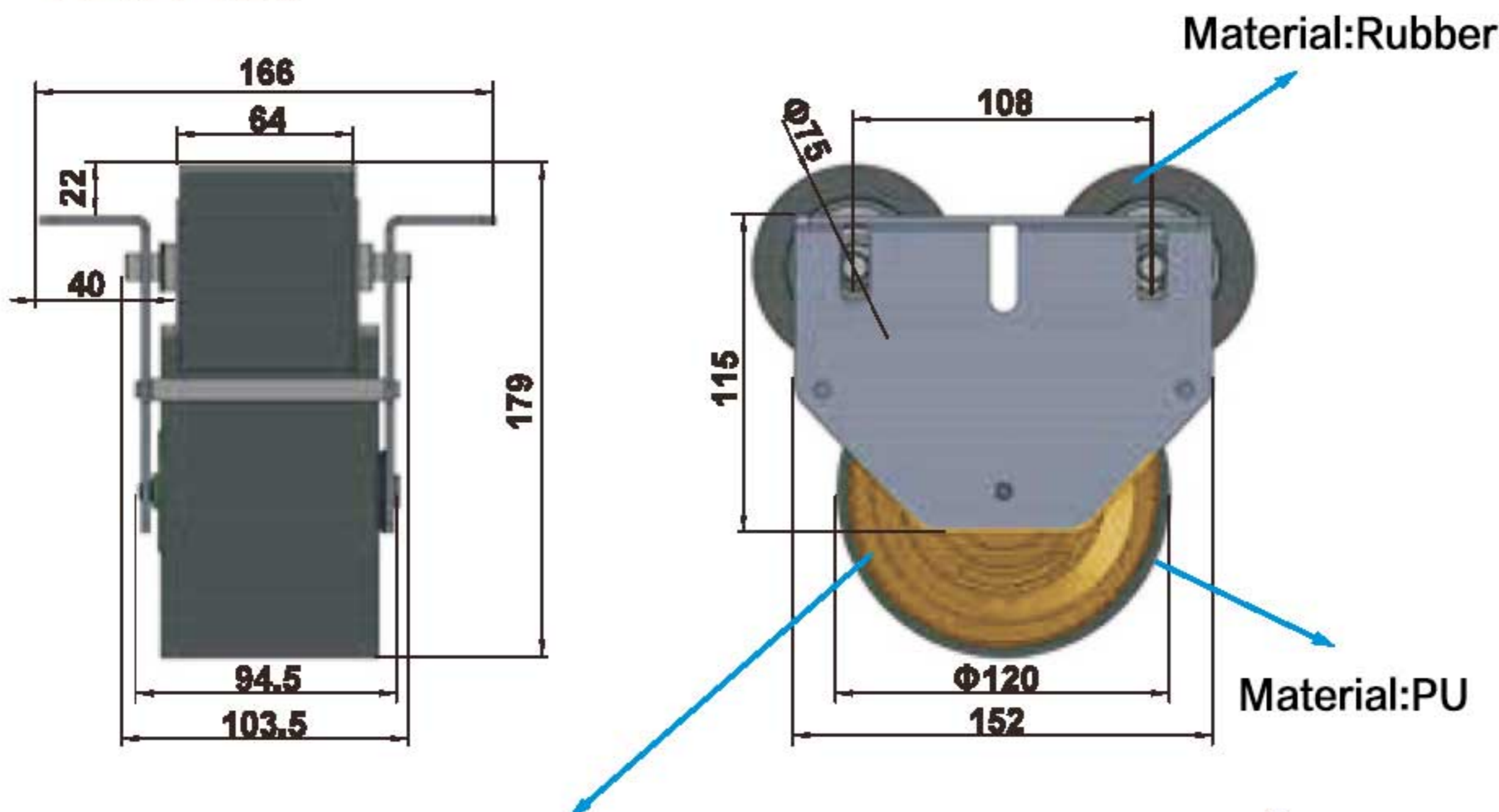


- Suitable for European/Australian standard pallet, nine-legged pallet



### 尺寸图 Dimensional Drawing

YZBT120



### 规格参数 Specifications

型号 Model	适用重量 Weight Range
YZBT120/AA	200~500kg
YZBT120/BA	500~1000kg

The direction of the arrow on the end cover is the rotation direction of the damping roller.



If the installation direction is wrong, there is a risk that the goods will rush out of the slide and the damping roller will be damaged.

### 订货示例 Part No.

<b>YZBT</b>	<b>120</b> /	<b>A</b>	<b>A</b>
Model	Diameter	Load capacity	Rotation
YZBT	120	A : 200~500kgs B : 500~1000kgs	A: Standard

### 使用注意事项 Suggestion

1. Cross-wheel slide slope range: 1.5~2.3° . Please refer to the specification table for cargo weight.
2. It is recommended that the center distance between adjacent damping rollers should not exceed the length of the pallet in the sliding direction to avoid acceleration and impact during the sliding process.
3. If there are special circumstances, please ask our staff for

Applicable ambient temperature: -5C ~ +40℃

Humidity: 30%~70% no condensation details.





**SZ ROLLER**



**Suzhou Zhisong Mould Co.,Ltd**

☎ : +86-18036068853

🌐 : [www.szzsroller.com](http://www.szzsroller.com)

✉ : [Gavin@szzsroller.com](mailto:Gavin@szzsroller.com)

📍 : Suzhou City, Jiangsu province, China